

Magic Dragon

[Http://www.microcrafters.net](http://www.microcrafters.net)

1. Overview

Magic Dragon gives its users one place to:

- 1. set up system for secure and fast operation**
- 2. perform computer maintenance with one click**
- 3. set up advanced options to make your computing experience better**
- 4. repair known issues with windows to eliminate future problems.**

2. SETUP

The first thing you will want to do after installing Magic Dragon is set up the Potion and Monthly Refresher options. While this is not a necessity it is highly recommended.

****Note** These options only need to be set up once. Or anytime you wish to change them.**

To perform these set up options

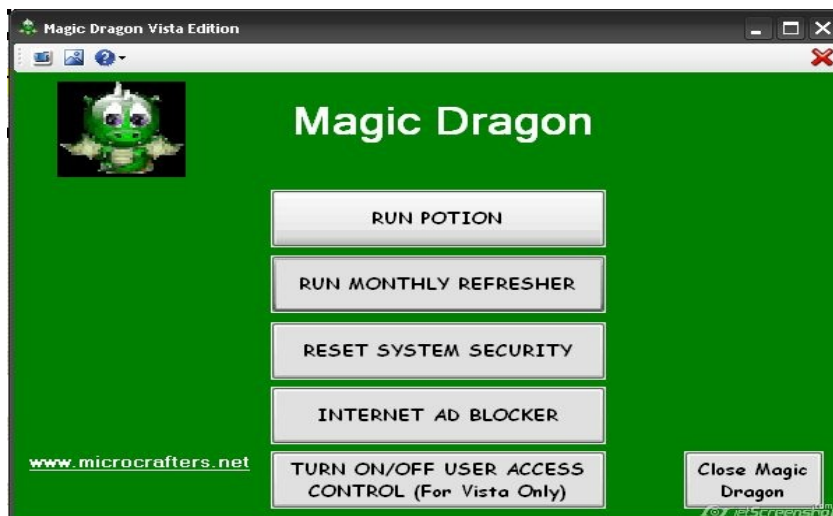
- 1. click "Settings" button on the tool Bar**

1.



2. Press “Y” for any option you want to use and “N” for any option you don’t want. See Potion Tutorial video at www.microcrafters.net for an explanation of these options

3. Main Menu



Magic Dragon's Main Menu gives you access to all of the tools available in Magic Dragon. Each of the options available are described below. You will notice the simple look and design of Magic Dragon. This was done to make Magic Dragon both easy to use for beginners as well as be quick and easy for advanced users.

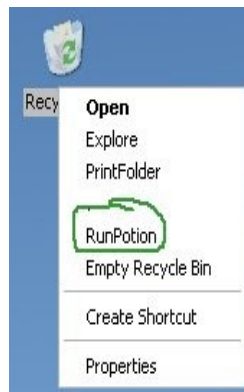
4. Potion and Monthly Refresher

1. Potion



Potion is the heart of Magic Dragon. It is a daily maintenance program that cleans your entire computer with one click. There are two ways to run Potion.

1.



Right-Click on your recycle bin and select

“Run Potion” instead of “Empty Recycle Bin”. When you do this you will both empty the recycle bin and delete all the temporary files hiding on your computer from both web surfing and file installations.

2.



Open Magic Dragon and click “RUN POTION ”

When Potion Finishes it will simply disappear.

2. Monthly refresher

Monthly Refresher sets up your computer to run more securely and more efficiently. There are several hundred settings that can be performed to help your computer run better and only two things stand in your way.

- 1. Knowledge of each and every setting available in windows and complimenting programs.**
- 2. Time to go through your entire computer and set each setting as it should be set**

The Monthly Refresher does all this for you in one easy click. Simply click the Monthly Refresher button on the menu

****Note** It is recommended that you close any unsaved programs before running Monthly Refresher**

****Note** Monthly Refresher only needs to be run every month or so. It is not recommended to run Monthly Refresher more often.**



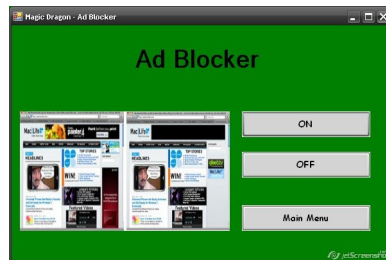
5. Reset System Security

Windows comes with certain security settings in place to keep your computer safe. However over time programs change these settings in order to perform certain functions for you. The “Reset System Security” button on Magic Dragons Main Menu simply resets these settings back to the way they should be.

Simply click the button then hit the space bar once it finishes.

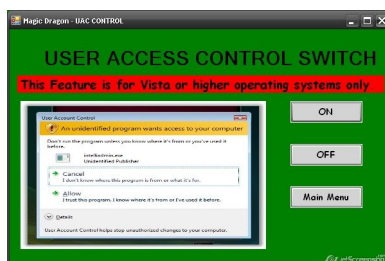


6. Internet Ad Blocker

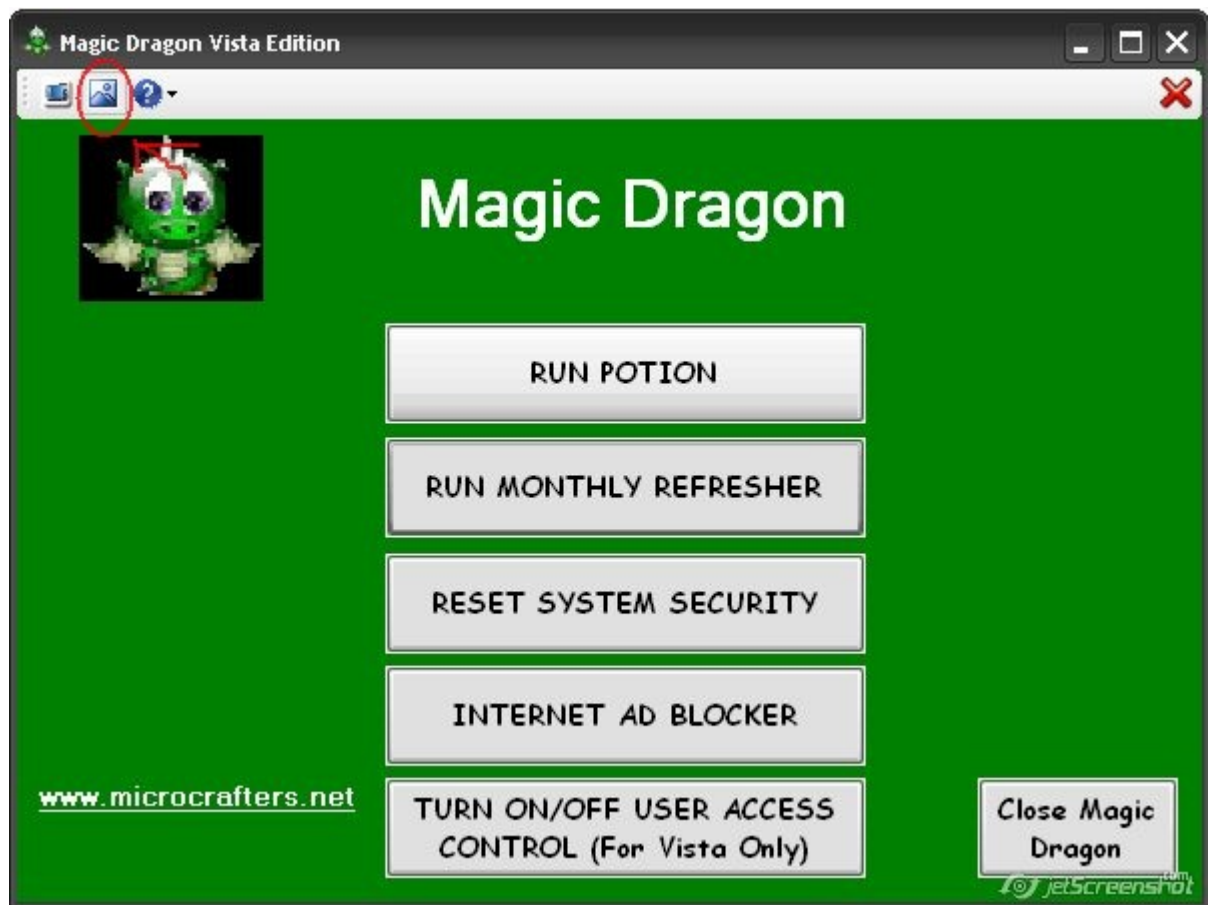


AdBlocker picks up where pop up blockers let go. With ad blocker the ad sites are never even loaded onto your computer, Preventing viruses and Trojans from ever moving in.

7. User Access Control



8. Theme Repair



The Theme Repair Utility is designed to repair the theme file if it becomes corrupt. Some threats to windows use the theme file to enter your system. Potion finds these issues and will delete the theme file if it is corrupt. Therefore the theme repair utility will repair the file for you.

9. Magic Dragon Help

1.



simply click the Help icon in the toolbar when you need assistance

That's It! On a day to day basis you can use the potion utility to keep your system running smoothly and once every month or so run the other utilities to maintain a fast secure system.

If you have any questions regarding Magic Dragon email us at Microcrafters@hotmail.com or go to <http://www.microcrafters.com>